



**GLOBAL  
ENGINEERING**

**FABRICATION & HOT DIP  
GALVANIZATION**



An ISO 9001:2015, ISO 14001:2015,  
ISO 45001:2018 Certified Co.

**Quality, Service,  
And Satisfaction  
Are Everything To Us!**

# About Us

M/S Global Engineering's facility is located in Muradnagar, Ghaziabad, Uttar Pradesh, and is equipped with a robust infrastructure that includes a state-of-the-art fabrication plant and a Hot Dip Galvanizing workshop. The company boasts extensive experience in fabricating services across a wide range of industries, including Telecom, Transmission Line Tower, Distribution Line Structure, Substations, Railways Bridge & Structure, Solar Structure, Heavy Structure, Canopy Structure, RSJ Pole, Grating and PEB Structure. Equipped with a broad array of advanced machinery, we are capable of meeting diverse fabrication requirements. By continuously applying new techniques, we strive to enhance our services and offer innovative, intelligent solutions to meet our clients' evolving needs.

With a strong commitment to delivering high-quality products and exceptional service, Global Engineering consistently provides reliable, fully satisfactory solutions to its valued clients. The company's success is driven by a steadfast focus on innovation and its well-earned reputation for quality.

## Our Mission

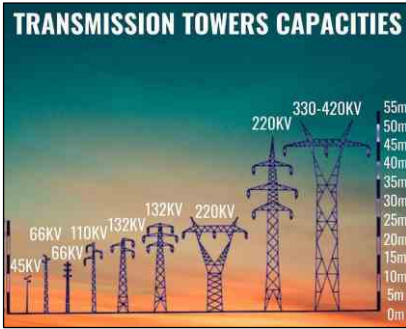
At Global Engineering, our mission is to lead the industry in customer satisfaction by setting standards of excellence. We are committed to delivering superior quality, which serves as our guarantee of your satisfaction.

We pride ourselves on providing exceptional service with meticulous attention to detail. Serving customers nationwide, we offer comprehensive fabrication packages that include metal cutting, punching, bending, numbering, fabrication, galvanizing, as well as design and engineering services.

## Our Vision

*Our vision is to be the world's most reliable and innovative manufacturer, service provider, and solution partner in the fabrication & galvanization industry.*

# Our Products



## Transmission Line Tower

A Transmission Line Tower is a steel structure that supports high-voltage power lines, enabling the transmission of electricity over long distances.

**We are manufacturer of 220/132/110/66KV  
Transmission Line Tower**

## Substations Lattice Structure

A Substation Lattice Structure is a steel framework used to support electrical equipment in substations, ensuring stability and safe transmission of electricity.

**We are manufacturer of 400/220/132/33/11KV  
Substations Lattice Structure**



## Solar Structure

A Solar Structure is a framework that supports solar panels, positioning them for optimal sunlight exposure to generate electricity efficiently.

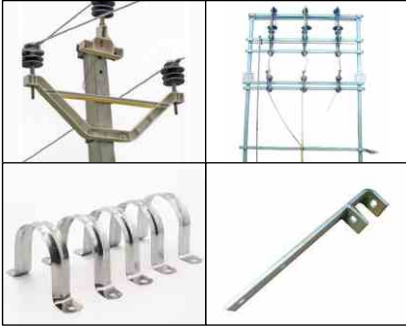
## Canopy Structure

A Canopy Structure is a freestanding or attached overhead covering that provides shade and shelter, commonly used in outdoor spaces or entrances.



## PEB Structure

A PEB (Pre-Engineered Building) Structure is a steel building framework designed and fabricated in a factory, then assembled on-site for quick and efficient construction.



## Distribution Line Items

Distribution Line Items are components used in power distribution networks, including poles, insulators, and conductors, to deliver electricity from substations to end users.

## Telecome Pipe Structure

A Telecom Pipe Structure is a framework designed to house and protect telecommunications cables and equipment, ensuring efficient and secure data transmission.



## Railway Bridges

Railway bridges are robust structures that span obstacles like rivers, roads, or valleys, enabling trains to safely cross while maintaining efficient rail connectivity. Designed for strength and durability, they support the immense weight and dynamic forces of moving trains.

## Grating

Galvanized steel grating is a corrosion-resistant grid made from steel, coated with a protective layer of zinc. It provides durable, long-lasting flooring and support in industrial and outdoor environments.



## Substation Pipe Structure

Substation pipe structures are essential frameworks used to support electrical equipment and components within substations. They ensure stability and organization, facilitating efficient maintenance and operation of power systems.

# Our Galvanization Services

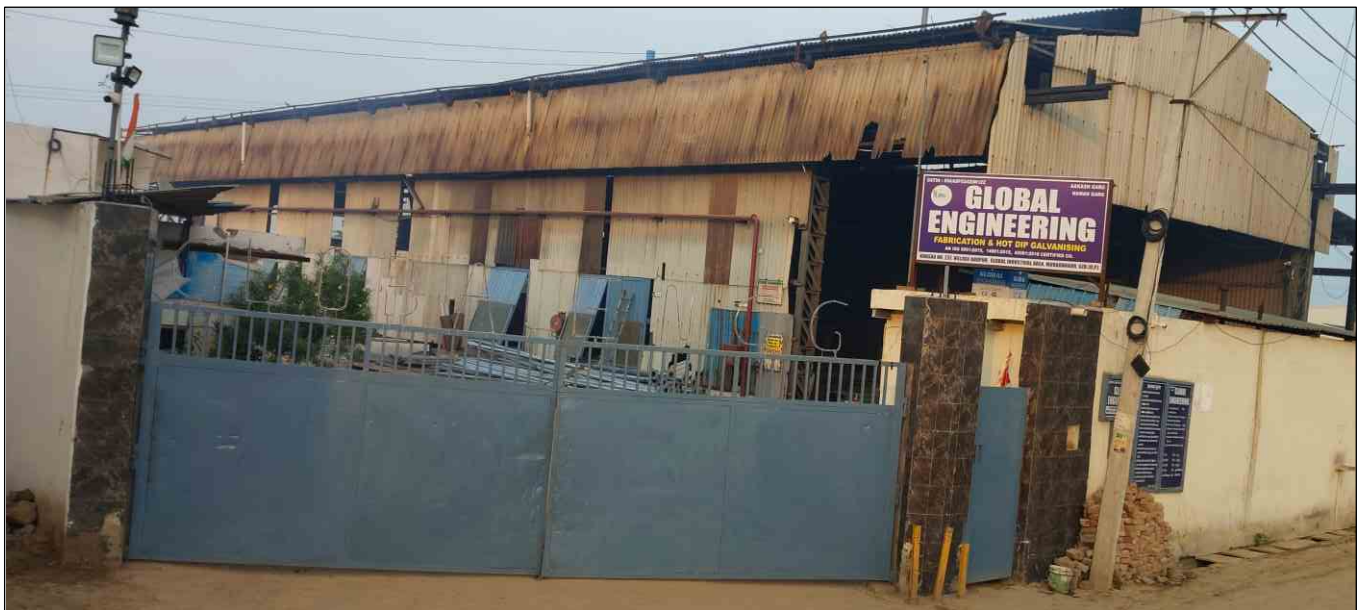
We offer a comprehensive range of galvanization services supported by a well-organized and highly advanced infrastructure that plays a crucial role in driving growth across industries. Our state-of-the-art workshop is equipped with modern machinery and cutting-edge technology, enabling us to deliver top-quality services. Backed by a team of highly experienced engineers and dedicated workshop staff, we ensure that our services are not only of the highest standard but also customizable to meet specific client needs at competitive rates.

**The size of our current Fabrication And Galvanizing Plant are 1,00,000 sq. ft.**

**The size of our current two zinc baths is...**

1st – 7200 (MM) (L) x 1500 MM (D) x 1300 MM (W)

2nd - 3100 (MM) (L) x 1250 MM (D) x 1000 MM (W)



# Our Galvanization Services



**Monopole & Octagonal Pole**



**Grating**



**Pipes And Tubes**



**Railway Sleepers**



**Railing & Walkway**



**RSJ Pole**



**Cable Tray & Ladders**



**All Types of Tower**



**Heavy Structure**

# Our Clients & Approvals

1. Uttar Pradesh Power Transmission Corporation Limited, ( UPPTCL ), Lucknow
2. Haryana Vidyut Prasaran Nigam Limited ( HVPNL ), Haryana
3. Purvanchal Vidyut Vitaran Nigam Limited ( PuVVNL ), Varanasi
4. Kashmir Power Distribution Corporation Limited ( KPDCL ), Kashmir
5. State Water and Sanitation Mission ( SWSM ), Lucknow
6. Reliance Jio Infocom Limited ( RJIL )
7. Adani Power ( AP )
8. Tata Power ( TP )
9. Ramboll India Pvt. Ltd. ( RIPL )
10. Indus Tower Limited ( ITL )





**GLOBAL**  
**ENGINEERING**

**Kh. No. 237, Vill. Abupur, Global Industrial Area, Muradnagar,  
Ghaziabad U.P.-201206 INDIA**



**+91-7417590039, +91-8265847693**



**[www.globalengineeringindia.in](http://www.globalengineeringindia.in)**



**[info.globalengineering7@gmail.com](mailto:info.globalengineering7@gmail.com)**

**[globalengineering1008@gmail.com](mailto:globalengineering1008@gmail.com)**